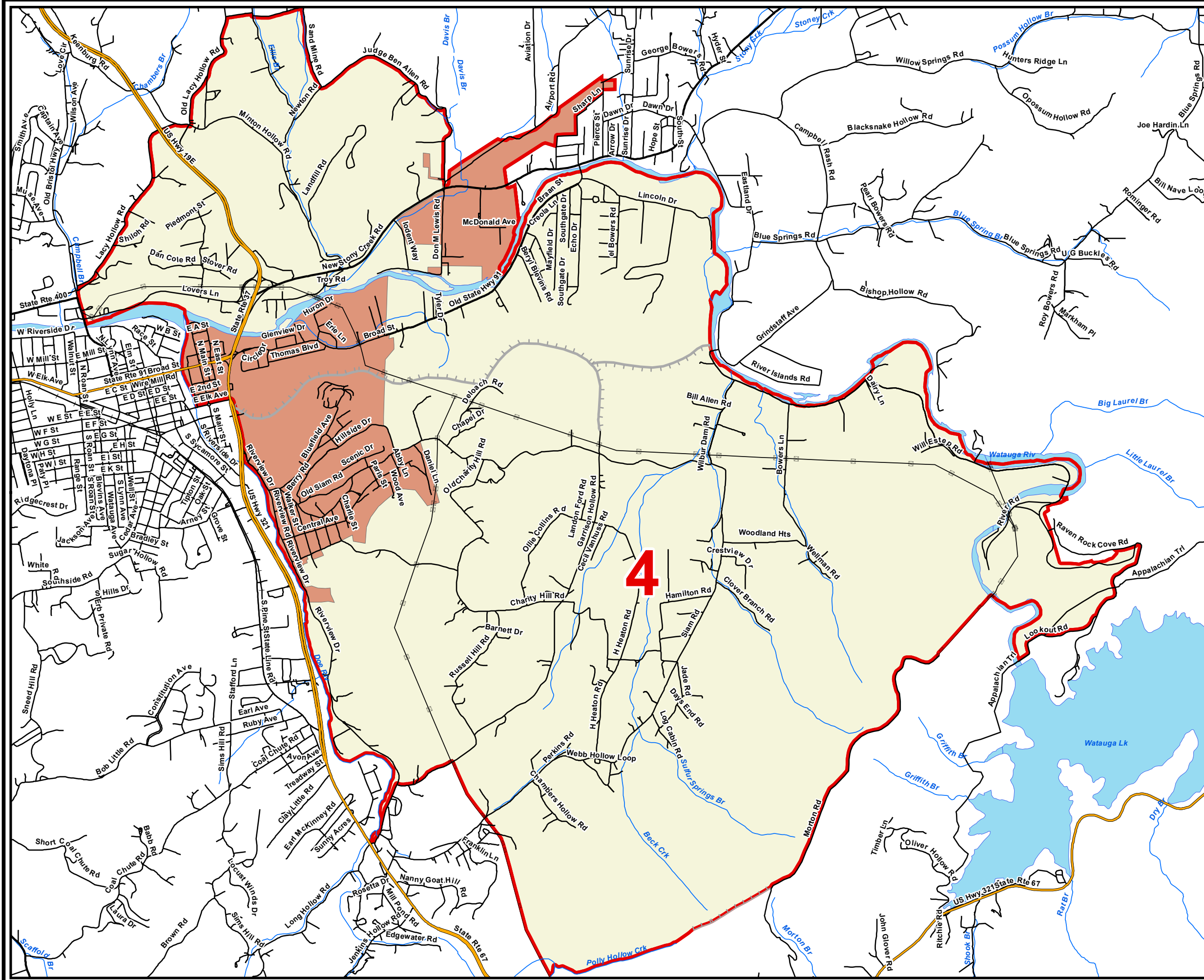
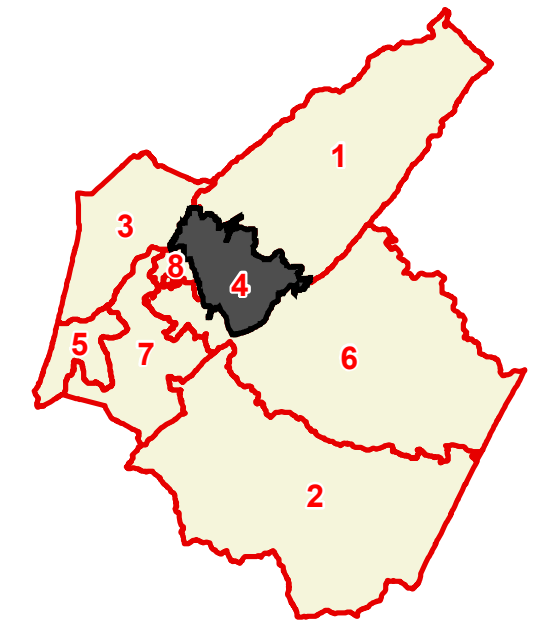


Carter County

County Commission District 4



- County Commission District
 - Interstates
 - U.S. Highway
 - State Highway
 - Local Roads
 - Railroads
 - Powerline
 - Ridgeline
 - Creeks / Stream
 - Lakes / Rivers
 - Census Designated Place
- City, Town**
- Elizabethton
 - Johnson City
 - Watauga
 - County



Compliments of:



OFFICE OF LOCAL GOVERNMENT
Created On: 9/12/2013

